



Sagamore Yacht Club

2019 Wednesday Night Racing

SAILING INSTRUCTIONS

1. RULES

- 1.1. The races will be governed as defined in *The Racing Rules of Sailing* (RRS) and the Minimum Equipment Recommendations of the YRA of Long Island Sound (YRALIS) (Category C)
- 1.2. *RRS 61.1a (2) is deleted.* (A protest flag is always required)
- 1.3. *RRS Appendix T* will be utilized.
- 1.4. In the absence of a RC boat:
 - 1.4.1. *RRS 26 is amended to use sound signals and no flags.*
 - 1.4.2. *RRS 27.3 is amended to use a sound signal.*
 - 1.4.3. *RRS 29.1 and 29.2 are deleted (RC will not signal OCS.)*
 - 1.4.4. *RRS 32 is amended (Abandoning only for safety reasons.)*

2. NOTICE TO COMPETITORS

Notices to competitors and changes to the sailing instructions will be posted on the Sagamore Racing Yahoo Group no later than 1800 Monday prior to a Wednesday race. Notices and changes may also be broadcast on VHF channel 78A before the warning signal, in which case Code Flag “L” will be displayed at the boat designated as RC.

3. SCHEDULE OF RACES

- 3.1. For Spinnaker 1, Spinnaker 2, JAM 1 and JAM 2 there shall be one race per evening.
- 3.2. The scheduled time for the warning signal for the above classes will be at 1830 hours for “AREA ALPHA” and 1845 for “AREA BRAVO.”
- 3.3. One Design and Oakcliff Coaching divisions may have multiple races per evening.
- 3.4. The scheduled time for the warning signal for the above classes will be at 1820 hours for “AREA ALPHA” and 1835 for “AREA BRAVO.”

4. CLASS FLAGS

- 4.1. Boats will sail in one of the handicap classes in accordance with the Scratch Sheet,
- 4.2. Skippers are required to display the designated Class flag from their backstay, stern pulpit or affixed to the hull.
- 4.3. Class flags are:

Class	Spinnaker 1	Spinnaker 2	JAM 1	JAM 2	One Design	Oakcliff Coaching
Flag	Numeral “1”	Numeral “2”	Numeral “3”	Numeral “4”	Mainsail logo	Oakcliff burgee

- 4.4. Sailing without Spinnaker for a race.
If a boat in one of the Spinnaker divisions decides that they will sail without spinnaker on any given day, they can be scored for that race with their non-spinnaker PHRF rating, provided that:
 - 4.4.1. They announce their intent during checkin and before their warning.
 - 4.4.2. They fly a purple streamer over their class flag prior to their warning until they finish
 Once the purple streamer is flown, a boat shall NOT fly spinnaker.

5. RACING AREA

“AREA ALPHA” (Oyster Bay in the vicinity of Cove Neck) will be the starting area of all races unless “AREA BRAVO” (Cold Spring Harbor near the entrance to Oyster Bay) is declared no later than 45 minutes prior to the scheduled first warning signal the day of the race. Announcement of this will be made on VHF channel 78A.

6. THE COURSE

- 6.1. All Government Marks shall be honored except “Cold Spring Harbor Light Tower” (Mark K), “Green Gong #1, Cold Spring Harbor” (Mark G), Red Nun 2 (Mark J) or when a Mark is designated as a Mark of the course.

6.2. Marks shall be chosen from the designated Marks of the Course (SI 12), racing marks shown in the mark diagram on Attachment A and all Government Marks in Oyster Bay, Cold Spring Harbor, West Harbor and the adjacent waters of Long Island Sound.

6.3. Sequence of Marks associated with “**AREA ALPHA**”

Course	Start, Finish	Marks	Rounding	Distance (nm)
1 (1x around)	1-1a	V,F	Port	2.3
1 (2x around)	1-1a	V,F,1-1a (gate),V,1-1a (gate),F	Port	4.6
2 (1x around)	V	6,F,1-1a(gate)	Stbd	2.4
2 (2x around)	V	6,F,1-1a (gate),V, 6,F,1-1a (gate)	Stbd	4.8
3 (1x around)	1-1a	F,1-1a (gate),V	Port	2.3
3 (2x around)	1-1a	F,1-1a (gate),V,1-1a,(gate),F,1-1a (gate),V	Port	4.6
4	1-1a	K	Port	4.2
5	1-1a	V,K	Port	4.8
6	6z / SYC	H, 1-1a (gate)	Stbd	4.6
7	6z / SYC	3, 1-1a (gate)	Stbd	3.5
RCS		Race committee special course		

Sequence of Marks associated with “**AREA BRAVO**”

Course	Start, Finish	Marks	Rounding	Distance (nm)
B	3	D	Port	2.7
C	F	K,F(gate),6	Port	4.1
D	3	G	Port	3.2
E	F	Y	Port	3.0
F	F	H,K	Port	3.4
I	3	F,Y	Port	3.0
J	3	N	Port	3.0
RCS		Race committee special course		

6.4. When course “RCS” is designated, the Race Committee shall announce all marks to be rounded and the rounding direction.

6.5. RG N “C”, just west of SYC dock, shall be treated as a “gate” with G C “11” when approaching SYC from the west channel or departing SYC for the west channel. Boats must pass between them.

6.6. The course for the Oakcliff Coaching division can be the standard courses, or there may be special inflatable marks or other marks. See SSI 16.

7. MARKS

1 – SYC Orange Mark ¼ nm east of Moses Point,

1a – SYC White Start Mark approximately 100 yards inshore of **1**

1b – Temporary Start Mark approximately 100 yards offshore of **1**.

6z – Buoy, stake or tetrahedron approximately ¼ nm NNE of 6, at the SW end of the SCYC fleet

Position is approximately W 40 53.50 N 73 31.00

Z – Yellow tetrahedron on station anywhere in the racing area. Position to be announced by RC

SYC – North East corner of SYC floating dock

In addition to the abovementioned marks, all of the marks listed on Attachment A (below) may be used as marks of the course.

8. AREAS THAT ARE OBSTRUCTIONS

8.1. RRS 28.1 is modified to include a restricted zone. Boats shall not sail through **1-1a** when it is used as a start/finish line EXCEPT;

8.2. when starting (between the warning signal and the start) or finishing;

8.3. when the start/finish line is designated as a “gate”;

- 8.4. when rounding the Start/Finish Mark as the start of a second lap, (Start/Finish line denoted as **1-1a** then Mark **1** is the mark to round for commencement of second lap).

9. THE START

- 9.1. For courses labeled with at **1-1a**, the starting line will be between Marks **1** and **1a**, unless the RC boat is moored to Mark **1**.
- 9.2. If the Start is at **1-1a** there **may** be a mark **1b** put out for Oakcliff. In this case, Oakcliff will use **1-1b** as a starting line and Sagamore will use **1-1a** as a starting line.
- 9.3. If the RC boat is moored to Mark **1** and for all courses that do not start at **1-1a** the starting line will be between a staff displaying on orange flag on the RC boat and the designated starting mark.
- 9.4. Boats whose warning signal has not been made shall avoid the starting area during the starting sequence for other races.
- 9.5. If a boat is OCS, the race committee will attempt to broadcast her sail number on VHF channel 78A. Failure to make a broadcast or to time it accurately will not be grounds for a request for redress. *This modifies RRS 62.1(a)*

10. THE FINISH

- 10.1. For courses labeled with Finish at 1-1a, the finishing line will be between Marks 1 and 1a, unless the RC boat is moored to Mark **1** or **1a**.
- 10.2. If the Finish is at **1-1a** there **may** be a mark **1b** put out for Oakcliff. In this case, Oakcliff will use **1-1b** as a finish line and Sagamore will use **1-1a** as a finish line
- 10.3. If the RC boat is moored to Mark **1** and for all courses that do not finish at 1-1a, except courses finishing at SYC, the finish line will be between a staff displaying on orange flag on the RC boat, or code flag “S” if RRS 32.2 is in effect, and the designated finish mark.
- 10.4. For courses finishing at SYC, the finish line will be the extension of the east edge of the dock out to the SOUTH edge of the mooring field.
- 10.5. At the finish it is each boat’s sole responsibility to ensure that the Race Committee has established positive identification. Calling out her sail number as she approaches the line is recommended.
- 10.6. In the absence of the Race Committee, each boat shall take her own time and report it on VHF channel 78A while finishing, as well as to the RC as soon as possible, along with her relative position with regards to other boats. *This modifies RRS 34.*

11. TIME LIMIT

- 11.1. The time limit for all races shall be two hours for the first boat to sail the course in accordance with rule 28.1, unless modified as per SI 2 above.
- 11.2. Any boat that finishes more than ½ hour after the first boat in their division will be scored TLE. *This modifies RRS 35.*

12. PROTESTS AND REQUESTS FOR REDRESS

- 12.1. *RRS 61.1a (2) is deleted.* (A red flag needs to be displayed regardless of boat length.)
- 12.2. It shall be the responsibility of the protesting skipper to notify the Race Committee of the protest at the finish line, unless not required to by 61.1a(3).¹
- 12.3. The Protest Time Limit specified in RRS 61.3 shall be 6pm the day following the race day by e-mail to: sagamoreyc.racechair@gmail.com.
- 12.4. If all parties are present and agree, the Protest Committee will make every attempt to arbitrate the protest under Appendix T, or hear the protest as recommended by Appendix M, an hour after the RC boat returns to the SYC Dock, in the SYC Club House.
- 12.5. If hearing the protest the day of the race is not possible, the Protest Committee will arbitrate the protest under Appendix T or hear the protest as recommended by Appendix M a half hour after the RC boat returns to the SYC Dock the following Wednesday race night in the SYC Club House.²

¹ Under RRS, it is the responsibility of the protesting boat to notify the protested boat in a timely fashion.

² The protest WILL BE HEARD. If one party only arrives, it will still be heard. If the other party is not there, they may request that the meeting be reopened, as per SI 66, “No later than 24 hours after being informed of the decision” (posted on the Yahoo group) and they must have “significant new evidence”



13. SCORING

The scoring system to be used, both for each race and for the series, is described in the NOR.

14. SAFETY REGULATIONS

- 14.1. Each boat racing, including one design, must carry a working VHF radio.
- 14.2. VHF channel 78A will be monitored by the Race Committee.
- 14.3. Prior to the first warning signal, each boat shall check in by VHF channel 78A. Each boat shall hail their name until acknowledged.
- 14.4. Any boat withdrawing before the start, or abandoning the race for any reason, shall notify the Race Committee at the earliest possible opportunity on the race area VHF channel 78A or by telephone to the Club at (516) 922-0555 at the earliest possible opportunity. Failure to follow this provision shall be grounds for protest.

15. RESPONSIBILITIES OF COMPETITORS

Competitors participate in the regatta entirely at their own risk. See rule 4, Decision to Race. Sagamore Yacht Club will not accept any liability for material damage or personal injury or death sustained in conjunction with or prior to, during or after the regatta.

16. OAKCLIFF COACHING DIVISION

Coaching, from on-board or a coach boat is allowed for this division. *This modifies RRS 41.*

Supplement to the SI's to be used in the absence of a RC Boat

These instructions are to be used when no official RC boat is stationed at the starting mark. This provides a means for a racing boat that has been designated as the RC to start the race and participate in the race.

The RC shall announce over VHF channel 78A no later than the Warning signal for the first class that this supplement applies.

17. RACING AREA

“AREA ALPHA” will be the starting area of all races. *This amends SI 5.*

18. THE COURSE

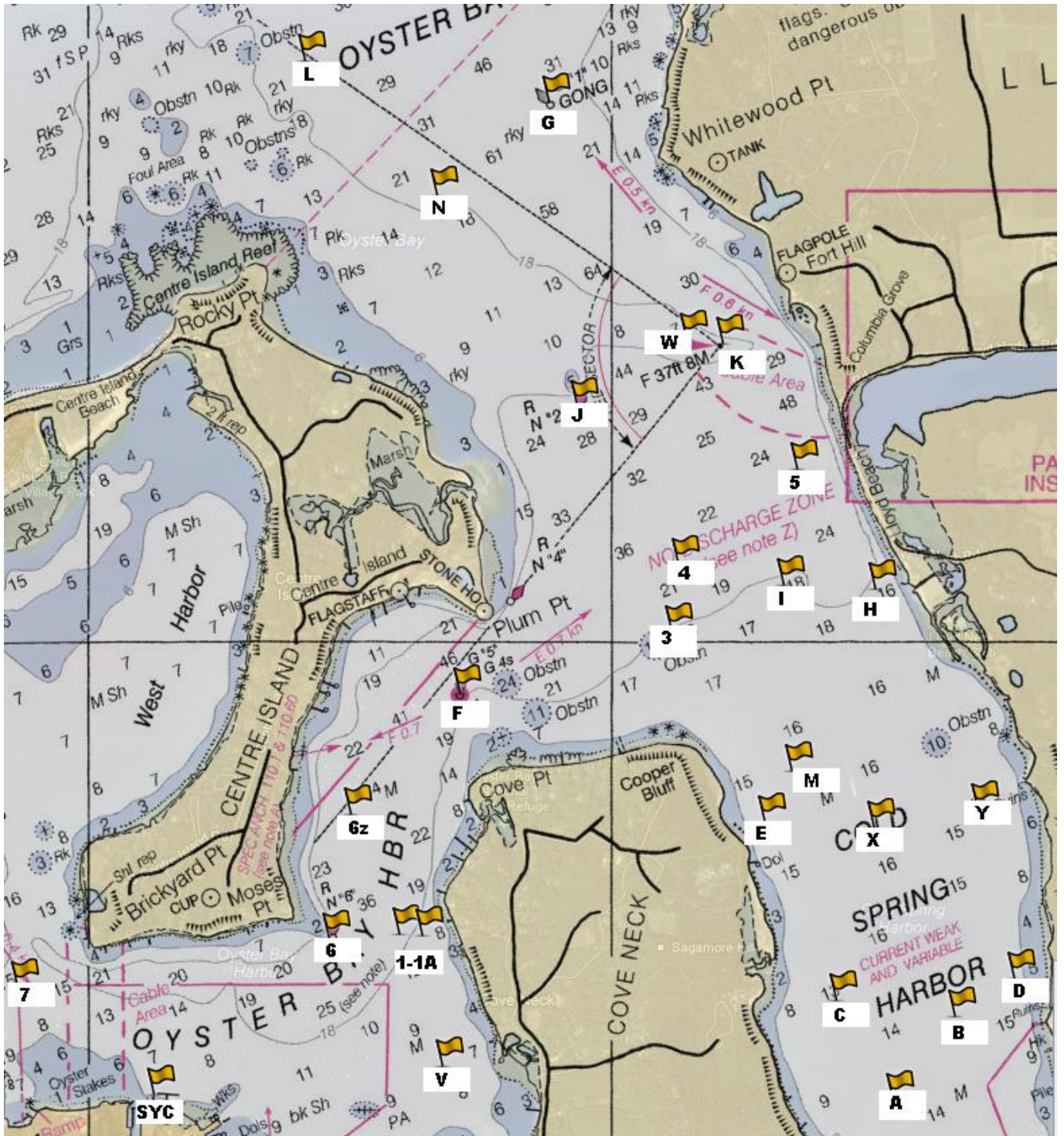
The course shall be one of course 1, 3, 4 or 5, once or twice around.

19. STARTING AND FINISHING

- 19.1. The RC shall announce over VHF channel 78A no later than the Warning signal for the first class that this supplement applies.
- 19.2. The RC shall fly a white flag from its starboard spreader and shall be within 50 feet of the starting line when it sounds the Warning signal.
- 19.3. RRS 26 is amended as follows:
The RC shall announce the class order on VHF rather than flying a class flag.
There shall be no additional flags displayed by the RC.
- 19.4. Postponements will be signaled by 2 long horn blasts. All boats shall then report to the RC for verbal instructions. *This modifies RRS 27.3.*
- 19.5. *RRS 29.1 is deleted.* (The RC need not signal a boat OCS.) Please note that this does **not** remove the responsibility of any boat from starting under the definition of *Start* in the RRS, nor does it restrict any boat observing an OCS violation from protesting under 60.1(a).
- 19.6. *RRS 29.2 is deleted.* (No general recall by the RC.)
- 19.7. RRS 32 is replace as follows:

32.1 After the starting signal, the race committee may *abandon* the race with three sound signals and multiple hails on channel 78A because of foul weather or for any other reason directly affecting the safety of the competition.

Attachment A - Approximate Mark Position



The stated latitude and longitude for most marks and relative distances and bearings is available on the Sagamore Racing Yahoo group and page 6.³



³ It has been noted that several marks not under the responsibility of SYC are not at their stated positions. The SYC RC expects to verify the marking and position of all marks in mid-May, and submit an updated to these SI's.

Mark	Location	Buoy	Characteristics	Lat (Deg)	Lat (Min)	Long (Deg)	Long (Min)
Out of Harbor							
G	West of Lloyd Neck	G"1"	Gong	40	55.56	73	30.25
P	Centre Island Reef	G"17"	Bell	40	56.31	73	31.96
R	North of Lloyd Neck	G"15"	Gong	40	57.69	73	29.25
T	Mid-Sound Buoy	R"32A"	Fl R 2.5 sec Bell	40	58.26	73	32.78
In Harbor							
1	West of Cove Neck	SYC	Orange Cylinder	40	53.15	73	30.8
1A	West of Cove Neck	SYC	White Cylinder	40	53.15	73	30.73
3	North of Cooper's Bluff	SCYC	Yellow Race Mark	40	54.02	73	29.77
4	North of Cooper's Bluff	SCYC	Yellow Race Mark	40	54.22	73	29.75
5	Lloyd Neck Causeway (N)	SCYC	Yellow Race Mark	40	54.5	73	29.29
6	Moses Point	R "6"	Nun	40	53.14	73	31.08
6Z	Yellow Tet. SW corner SCYC moorings	SYC	Yellow Tetrahedron	40	53.50	73	31.00
7	North of The Waterfront Center	G "7"	Nun	40	52.997	73	32.302
A	1/2 nm WNW of CSHBC	SCYC	Yellow Race Mark	40	52.67	73	28.93
B	1/2 nm NW of CSHBC	SCYC	Yellow Race Mark	40	52.91	73	28.69
C	East of Cove Neck	SCYC	Yellow Race Mark	40	52.96	73	29.15
D	1/2 nm N of CSHBC	SCYC	Yellow Race Mark	40	53.02	73	28.47
E	Southeast of Cooper's Bluff	SCYC	Yellow Race Mark	40	53.48	73	29.42
F	Clubhouse Channel	G"5"	Fl G 4 sec	40	53.85	73	30.6
G	West of Lloyd Neck	G"1"	Gong	40	55.56	73	30.25
H	Lloyd Neck Causeway (S)	CSHBC	Yellow Race Mark	40	54.15	73	28.99
I	Between M & H	CSHBC	Yellow Race Mark	40	54.16	73	29.35
J	Sandbar - off C.I.	R"2"	Nun	40	54.68	73	30.14
K	Lighthouse	Gvmt	Spire - 37ft - 7mi - Red/White	40	55.01	73	29.63
L	Centre Island Reef	SCYC	Yellow Race Mark	40	55.67	73	31.17
M	East of Cooper's Bluff	SCYC	Yellow Race Mark	40	53.62	73	29.31
N	Off Kennedy's Beach, C.I.	SCYC	Yellow Race Mark	40	55.29	73	30.67
O	West of Lloyd Neck	SCYC	Yellow Race Mark	40	56.41	73	29.87
P	Centre Island Reef	G"17"	Bell	40	56.31	73	31.96
R	North of Lloyd Neck	G"15"	Gong	40	57.69	73	29.25
S	Between P & O	SCYC	Yellow Race Mark	40	56.22	73	30.81
T	Mid-Sound Buoy	R"32A"	Fl R 2.5 sec Bell	40	58.26	73	32.78
V	Oyster Bay Cove	SYC	Orange Ball	40	52.77	73	30.65
W	Mark west of Lighthouse in CSH	SCYC	Yellow Race Mark	40	54.53	73	29.41
X	Between E & Y (Cold Spring Harbor North)	CSHBC	Yellow Race Mark	40	53.46	73	29
Y	East of X (Cold Spring Harbor North/East)	CSHBC	Yellow Race Mark	40	53.024	73	27.710
Z	Gate Mark at North end of CSHBC mooring	CSHBC	Yellow Race Marks				
	Plum Point	R"4"	Nun	40	54.3	73	30.42